

Rand Farm Park

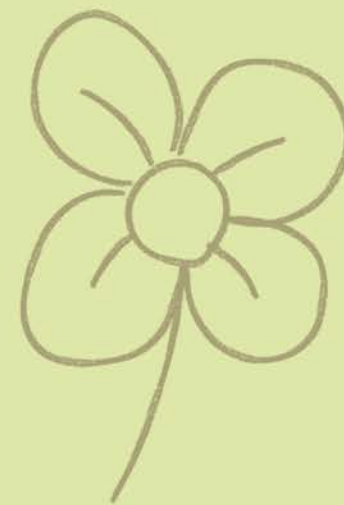
Day Nursery & Pre-School

Embracing nature-based
play on a farm



Contents

- 03 Introducing Farm Day Nurseries & Pre-Schools
- 03 Welcome to Rand Farm Park Day Nursery & Pre-School
- 04 Working in partnership with parents
- 05 Communication, Reading, and Sensory Play
- 06 Art, Maths, and Problem Solving
- 07 Outdoor Learning and Being on the Farm
- 08 Building Friendships
- 08 Investigation and Exploration
- 09 Healthy Eating
- 10 Farm Day Nurseries & Pre-Schools



Introducing Farm Day Nurseries & Pre-Schools

In today's world, children don't always get the opportunities to really be connected with nature.

At Farm Day Nurseries our vision and values are based around nature-based play. With free flow access into our garden areas, we provide endless opportunities for children to develop curiosity for our natural world.

Along with the health benefits of being active outside, a rich natural environment stimulates all our senses from tasting vegetables we have grown, smelling the flowers and herbs to feeling the rain on our faces!

At Farm Day Nurseries we believe learning should be an adventure! In our forest school sessions, we climb trees, make campfires, and build dens, helping children to learn life skills, and build confidence and self-esteem.

We have animals in our settings too, from guinea pigs and rabbits to trips to the farmyard. Children learn how to look after and care for them, giving a sense of responsibility and helping to learn an appreciation for living things and our environment.

But just as importantly, we give children time to relax, listen to the sounds of nature to develop a sense of calmness. It's our privilege to make learning an adventure. Children are experts in their own play. We follow their lead!

Find out more at
www.farmdaynurseries.co.uk



Welcome to Rand Farm Park Day Nursery & Pre-School

Hi, I'm Sarah Hutson, Nursery Manager of Rand Farm Park Day Nursery & Pre-School. We are located in the heart of the award-winning Rand Farm Park in Lincoln.

Our fantastic Day Nursery & Pre-School offers children lots of unique learning opportunities out on the farm where children can enjoy daily visits to see the animals.

Here at Rand, we offer age-appropriate stimulation and development through our surrounding environment, with a particular focus on the great outdoors and natural resources.

Stimulation focuses on movement, sound, colour and touch, and we encourage our children to explore, develop and enjoy their surroundings.



Sarah, Nursery Manager



Working in partnership with parents

Delivering a great Early Years education is only the start for Farm Day Nurseries. We believe that children benefit most from early years education when parents and the Nursery work together in partnership.

Your Key Person

You and your child will have an opportunity to build a special relationship with your nominated Key Person, supporting your child's transition into and through the Nursery. They will be a primary contact for supporting your child's development and providing feedback.

Planning in the Moment

Planning in the moment is a child-centred teaching approach which supports children's natural desire to explore and learn. Planning in the moment enables us to give more focused feedback monthly in the baby room, every 5 weeks in the toddler room and every 10 weeks in the Pre-School room.

See our website to download our eBook to find out more on planning in the moment.

Parent Zone

We have our **ParentZone** app that is available to all parents. This special app is a great tool that offers you the ability to access information about your child's day at a time that suits you best.

Parent partnership is highly important to us at Farm Day Nurseries and this app allows us to improve communication and work closely with you during your child's time with us.

Also running alongside the app, your child's Key Person will regularly meet with you to discuss your child's development and share with you their learning journey book.

Get Involved

As a parent, why not join in with our 'Play and Stay' sessions? We welcome parents who wish to volunteer to read stories, share personal expertise, gardening, fundraising and much more. Ask your Nursery Manager for more details.





Communication, Reading & Sensory Play

Our children enjoy opportunities for signing and rhymes, we encourage talking and communication, with storytelling in exciting environments and interesting props to broaden vocabulary.

In the children's exploratory play they often read maps, give directions and work as a team communicating effectively. Farm Day Nurseries is about adventure, discovery and being immersed in all the surroundings have to offer. Our nurseries also offer opportunities to learn about other countries and different languages.

Children learn through awakening their five senses. On the farm we listen to the sounds of the animals and explore our senses through immersing ourselves into daily farm life.

Whether that be through feeding and petting the animals, or helping the farmers with their day-to-day jobs, the children are constantly discovering new experiences they can later reflect on.

We also have vegetable patches in the gardens where children touch and smell the vegetables or herbs they are cultivating.

We try to avoid plastic toys; we prefer to use natural resources and vegetables that support their imagination.



Art, Maths & Problem Solving

A child's imagination is endless

Building Creativity & Imagination

At Farm Day Nurseries, we embrace a play-based philosophy, giving children the opportunity to immerse themselves in activities that promote imagination and creative play. This type of play is one of the most natural ways for children to learn about the world. Children in our settings have opportunities to manipulate and touch a variety of creative resources that they can use to express themselves ... sometimes getting very messy!



Making Early Maths Enjoyable

Rhymes and songs introduce children to numbers, we use scales to weigh out the foods for recipes and tape measures to monitor how fast our plants grow in the vegetable patch. As with all our resources, we enjoy using natural materials. Children draw numbers in sand pits and we use funnels or measuring jugs for water-based activities.





The daily visit to the farm encourages learning, understanding and respect for our natural world. Offering a range of different activities, children get to meet the animals and take part in lots of hands-on animal experiences such as egg collecting, feeding the goats and petting the rabbits and guinea pigs. The seasons have a big part to play with farm-life, offering endless opportunities for the children to get involved with - including the seeing baby lambs and chicks in the spring!

We also run a special programme called 'Mini Farmers', specifically designed for Pre-Schoolers. Mini Farmers provides the perfect opportunity for children to be enveloped in farm life and experience more natural learning opportunities, providing tons of benefits to children's development.

Outdoor Learning & Being on the Farm

Nature-based play is central to everything we do. All our rooms have free flow access to the gardens and children can take daily visits to the onsite farm.

The resources in our gardens vary but all help children get active. Children ride bikes, plant flowers, climb trees and play in mud kitchens. Across most of our nurseries we also run Forest Schools based experiences to encourage children to engage with nature and learn about our natural world. Using planning in the moment, we turn everyday moments into learning opportunities.



Building Friendships

Nursery is often the first opportunity a young child has to make friends



We encourage activities in large and small groups to help children interact. From sitting around the campfire during Forest School sessions (available at certain locations) to playing football or even participating in delivering the post; the opportunities are endless.

To help build the characteristics of caring, at Farm Day Nurseries the children will come in close contact to animals. Children are actively encouraged to look after, feed and handle them. We also encourage children to care for our natural world by watering the plants within their own childcare rooms.



Investigation and Exploration

Children learn best by investigating the world around them. They do this by using all their senses, including sight, hearing, touch, taste and smell. Through investigation children learn how things work, what things do, and why things happen.

We enjoy being outside and exploring the differences between Spring, Summer, Autumn and Winter. With bug hunts in the Spring to running through the leaves and jumping in puddles through the Autumn, it's important for children to understand how our world changes throughout the seasons.

To inspire inquisitive minds, we also run small science experiments. Children love to see how different materials and colours interact with each other. Our teachers also enjoy it too!

Being surrounded by a farm environment encourages farm-based exploration that is unique to a child's learning. As farm life is always changing, the opportunities for new experiences are endless at our Farm Day Nurseries, as children get stuck in with everything daily farm life has to offer.

Across our farms, this can include experiences like exploring the farm and the animals, learning about the animals eating habits and living environments, collecting eggs from the Hen House's, filling the hay-nets and much more.

Each Farm Day Nursery and their experiences are unique to the farm-setting. Children love exploring the great outdoors, with their visits to the farm being the highlight of their day.



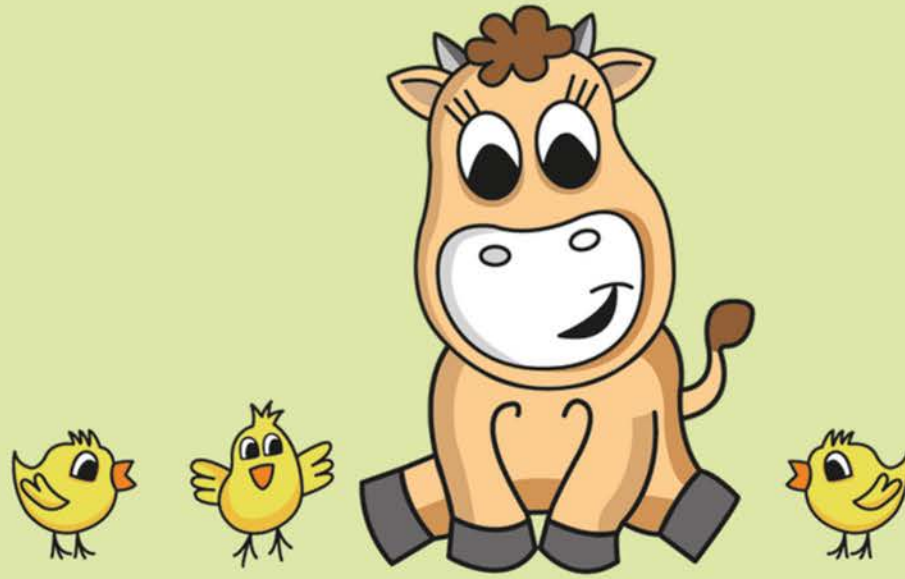
Healthy Eating

Learning about food is key for the children at Farm Day Nurseries

At Farm Day Nurseries, we not only offer best-in-class meals but we also teach children where their food comes from. Children learn the whole food to fork experience by growing vegetables and then picking them from the growing patch to cook with, or by collecting them from the farm itself!

Our consultant nutritionist ensures a well-balanced menu that allows us to easily adapt meals for special dietary needs. In our 5-star hygiene rated Kitchens, our Chef serves Red Tractor approved produce. Red Tractor ensures we reduce food miles and have confidence in where it has been produced.





Rand Farm Park

Day Nursery & Pre-School

www.randfarmparkdaynursery.com
01673 262021